

# Delock Barcode Scanner Module 1D and 2D - German Version

## Description

This barcode scanner module by Delock can be used for installation in any housing.

### Small but powerful

The module convinces with a size of 21 x 14 x 9 mm. **All common 1D and 2D barcode** types can be precisely captured even at long distances. Additionally, the scanner recognizes barcodes displayed on displays and monitors.

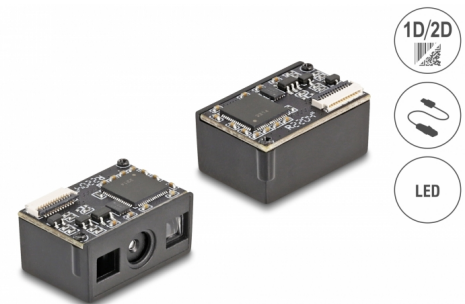
### Automatic adaptation to ambient brightness

The scanner automatically adapts to the ambient brightness and captures up to **30 scans per second** under optimal lighting conditions.

In low ambient brightness, the barcode is illuminated by an **additional white LED** and can therefore also be used in poor lighting conditions.

## Note

This module is intended exclusively for the output of the German keyboard.



21 x 14 x 9 mm

**Item no. 90603**

EAN: 4043619906031

Country of origin: China

Package: White Box

## Specification

- Connector: 1 x FPC 12 pin female
- Decoding chip: ARM Cortex 32 Bit
- Resolution: max. 640 x 480
- Reading distance: ca. 30 mm to 350 mm
- Reading accuracy: 4 mil
- Light colour: visible LED red
- Compensation light: LED white
- Sensor: CMOS image sensor
- Scan rate: up to 30 scans per second
- Scan angle: 44°

- Surrounding brightness: max. 100000 Lux
- Input voltage: 3.3 V
- Current consumption:  
operation: max. 110 mA  
standby: max. 60 mA
- Operating temperature: -20 °C ~ 60 °C
- Storage temperature: -40 °C ~ 80 °C
- Relative humidity: 0 - 95 % (non condensing)
- Colour: black
- Weight: ca. 2 g
- Dimensions (LxWxH): ca. 21 x 14 x 9 mm
- Scancodes:  
Code 128  
Code 39  
Interleaved 2 of 5  
EAN-8 / EAN-13  
ISBN - 13  
Data Matrix  
PDF417  
QR Code

---

## System requirements

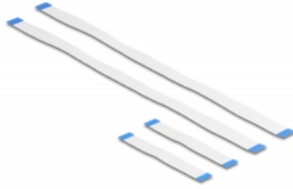
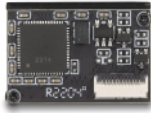
- Android 11.0 or above
- iPad Pro (2018)
- Linux Kernel 5.15 or above
- Mac OS 12.4 or above
- Windows 8.1/8.1-64/10/10-64/11

---

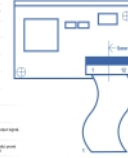
## Package content

- Barcode scanner module
- 2 x FPC 12 pin flat ribbon cable, length ca. 6 cm
- 2 x FPC 12 pin flat ribbon cable, length ca. 20 cm
- User manual

## Images



Pin	Pin input / output	Define	Description
Pin 1	-	NC	
Pin 2	Power	VCC	Input +5.0V
Pin 3	GND	GND	-
Pin 4	Input	KX	Release
Pin 5	Output	TX	Serial
Pin 6	Input	D-	USB D-
Pin 7	Output	D+	USB D+
Pin 8	-	NC	-
Pin 9	Output	BEEPEN	Microcontroller output for beeping
Pin 10	Output	DLED	Microcontroller output for LED status
Pin 11	Input	RESET	Reset input (active low) connected to button
Pin 12	Input	TRIG	Trigger for data input connected to button



## Technical characteristics

Operating voltage:	3.3 V
Operating temperature:	-20 °C ~ 60 °C
Current consumption:	Betrieb: max. 110mA Standby: max. 60mA
Resolution:	640 x 480
Scan rate:	30 Scans pro Sekunde
Reading distance:	30 mm - 350 mm
Sensor:	CMOS Bildsensor
Scancodes:	EAN-8 EAN-13 Interleaved 2 of 5 Standard Code 39 Code 128 PDF417 DataMatrix QR Code ISBN – 13
Surrounding brightness:	100000 Lux

## Physical characteristics

Weight:	2 g
Length:	21.0 mm
Height:	9.0 mm
Colour:	black