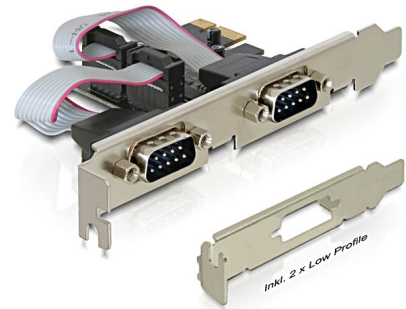


# Delock PCI Express Card to 2 x Serial

## Description

The PCI Express card by Delock expands a PC by two external serial ports. Different devices such as scanner, printer, mouse etc. can be connected to this card. By using the included low profile brackets, the PCI Express card can be also installed into a Mini-PC.



**Item no. 89220**

EAN: 4043619892204

Country of origin: China

Package: Retail Box

## Specification

- Connectors:  
external: 2 x serial RS-232 DB9 male  
internal: 1 x PCI Express x1, V1.1
- Chipset: Oxford
- Data transfer rate up to 230.4 Kbps
- Compatible with 16C950 UART
- FIFO: 128 byte

## System requirements

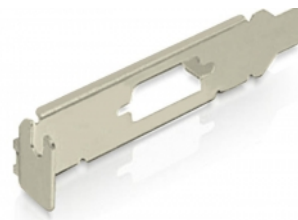
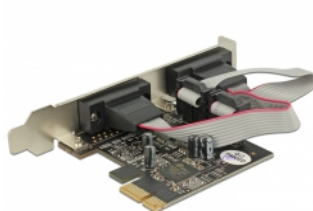
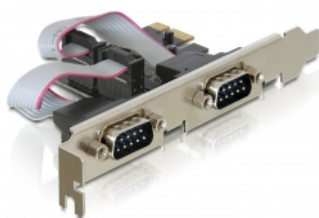
- Windows 7/7-64/8.1/8.1-64/10/10-64
- PC with one free PCI Express slot

## Package content

- PCI Express card
- 2 x low profile bracket
- Driver CD

- User manual

## Images



## General

Form factor:	Low Profile
Specification:	PCIe 1.1
Supported operating system:	Windows 10 32-Bit Windows 10 64-Bit Windows 7 32-Bit Windows 7 64-Bit Windows 8.1 32-Bit Windows 8.1 64-Bit
Slot:	PCIe

## Interface

External:	2 x serial RS-232 DB9 plug
Internal:	1 x PCI Express x1, V1.1

## Technical characteristics

Chipset:	OXPCIe952
Data transfer rate:	up to 230.4 Kb/s
FIFO:	128 byte
UART:	16C950

## Physical characteristics

Pin finishing:	gold-plated
Screw type:	#4-40 UNC
Slot bracket:	Low Profile standard
Depth:	11.1 mm
Width:	65 mm
Height:	59 mm
Colour:	anthracite



