

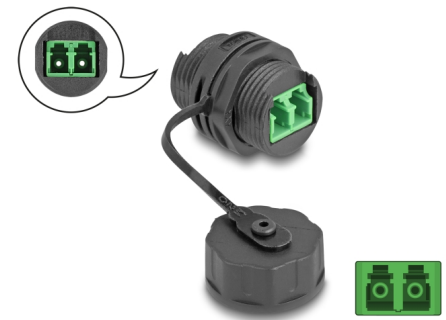
Delock Optical Fiber Cable Connector LC Duplex female to LC Duplex female with protective cap waterproof

Description

This cable connector by Delock can be used to connect or extend two LC Duplex optical fiber cables and is ideal for housing or on a panel.

IP68 dust and waterproof

The coupler offers increased protection against dirt and moisture for the connection of the network cables.



Item no. 88033

EAN: 4043619880331

Country of origin: China

Package: Zip poly bag

Specification

- Connectors:
 - 1 x LC Duplex female
 - 1 x LC Duplex female
- For single-mode fiber
- Ceramic sleeve
- Insertion loss < 0.2 dB
- Silicone sealing ring orange
- With sealing cap
- Thread size: M20
- Built-in hole Ø: 20 mm
- Protection class: IP68
- Operating temperature: -20 °C ~ 70 °C
- Housing material: PC
- Housing colour: black
- Dimensions (LxWxH): ca. 30 x 30 x 25 mm

System requirements

- A free LC Duplex plug

Package content

- Cable connector

Images



Interface

Connector 1:	1 x LC Duplex female
Connector 2:	1 x LC Duplex female

Technical characteristics

Operating temperature:	-20 °C ~ 70 °C
------------------------	----------------

Physical characteristics

Housing colour:	black
Housing material:	PC
Length:	30 mm
Width:	30 mm
Height:	25 mm