

Delock RJ45 plug to RJ45 jack Adapter Cat.6A 90° downwards angled

Description

With this adapter by Delock the RJ45 jack of a device can be angled by 90°. This makes it easier to connect a network cable in hard to reach places and prevents damage to the device socket or cable breaks due to bending.

Multifunctional application

The RJ45 adapter can be used, for e.g. in network cabinets, patch panels, servers or switches.



Item no. 87862

EAN: 4043619878628

Country of origin: China

Package: Zip poly bag

Technical details

- Connectors:
 - 1 x RJ45 plug downwards angled
 - 1 x RJ45 jack
- 1:1 connected
- Cat.6A specification
- Contacts gold-plated
- Dimensions (LxWxH): ca. 54.3 x 22.3 x 19.2 mm

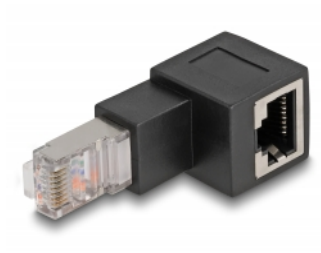
System requirements

- A free RJ45 plug

Package content

- RJ45 adapter

Images



General

Specification:	Cat. 6A
----------------	---------

Interface

Connector 1:	1 x RJ45 plug downwards angled
Connector 2:	1 x RJ45 jack

Physical characteristics

Length:	54.3 mm
Width:	22.3 mm
Height:	19.2 mm