

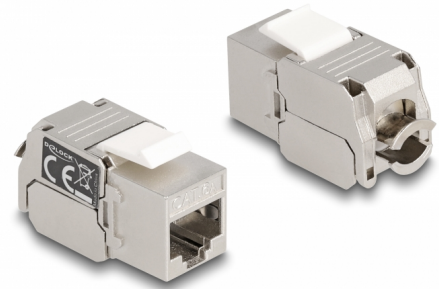
# Delock Keystone Module RJ45 jack to LSA Cat.6A with LED

## Description

This module by Delock can be used to connect a network cable and is suitable for easy snap-in mounting in various holders, such as keystone patch panels, face plates or surface-mount boxes.

### With LED

An LED is integrated into the Keystone module to make it easier to find the module in a patch panel by using a cable tester. Depending on the cable tester, the LED lights up green or red.



**Item no. 87856**

EAN: 4043619878567

Country of origin: China

Package: Zip poly bag

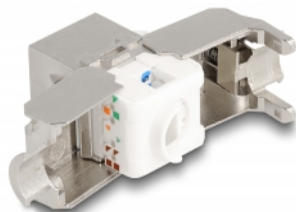
## Technical details

- Connectors:
  - 1 x RJ45 jack (8P/8C) >
  - 1 x LSA 180° (toolfree)
- Cat.6A specification
- LED indicator: green (active) / red (passive)
- Shielded (STP)
- TIA-568A/B pinout
- For solid or stranded wire (24 - 22 AWG)
- For Keystone ports with 19.2 x 14.9 mm
- Material: zinc diecast / plastic
- Colour: silver / white
- Dimensions (LxWxH): ca. 38 x 20 x 16 mm

## Package content

- Keystone module
- Zip-tie

## Images



active



passive



## General

Suitable for conductor gauge:	24 - 22 AWG
Specification:	Cat. 6A

## Interface

Connector 1:	1 x RJ45 jack
Connector 2:	1 x LSA 180° (toolfree)

## Physical characteristics

Material:	zinc diecast / plastic
Shielding:	STP
Length:	38 mm
Width:	20 mm
Height:	16 mm
Colour:	silver / white