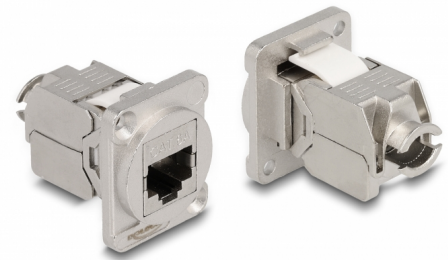


# Delock D-Type Module RJ45 Cat.6A female to LSA female

## Description

This module by Delock can be mounted e.g. in panels or cases with D-type openings for XLR jacks.  
This makes it ideal for integrating digital equipment into professional audio systems.



**Item no. 87818**

EAN: 4043619878185

Country of origin: China

Package: Zip poly bag

## Technical details

- Connectors:  
external: 1 x RJ45 jack  
internal: 1 x LSA jack
- Material: zinc die cast
- Colour: black
- For D-type ports with 31 x 25 mm
- Panel cut-out (diameter): ca. 24 mm
- Two mounting holes for screw fastening
- Dimensions (LxWxH): ca. 38 x 31 x 25 mm

## Package content

- D-Type module

## Images



## General

Mounting type:	D-Type
----------------	--------

## Interface

Connector 1:	1 x RJ45 jack
Connector 2:	1 x LSA 180° (toolfree)

## Physical characteristics

Diameter:	24 mm
Length:	38 mm
Width:	31 mm
Height:	25 mm
Colour:	black