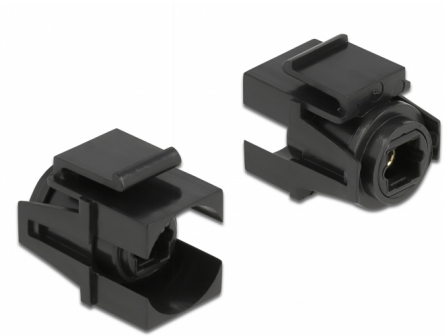


# Delock Keystone Module TOSLINK female > TOSLINK female black

## Description

This module by Delock can be used to extend e.g. a TOSLINK cable. With its standardised dimensions it can be used for easy snap-in mounting in e.g. a Keystone patch panel, face plate or surface-mount box. The short, angled cable has a small mounting depth and allows a space-saving installation in hard to reach places in equipment or in cable ducts.



**Item no. 86868**

EAN: 4043619868681

Country of origin: China

Package: Zip poly bag

## Specification

- Connectors:
  - 1 x TOSLINK female S/PDIF >
  - 1 x TOSLINK female S/PDIF
- For Keystone ports with 19.2 x 14.9 mm
- Colour: black
- Dimensions (LxWxH): ca. 25.3 x 16.6 x 21.0 mm

## Package content

- Keystone module

## General

Mounting type:	Keystone module
----------------	-----------------

## Interface

External:	1 x TOSLINK female S/PDIF
Internal:	1 x TOSLINK female S/PDIF

## Physical characteristics

Length:	25.3 mm
Width:	21 mm
Height:	16.6 mm
Colour:	black