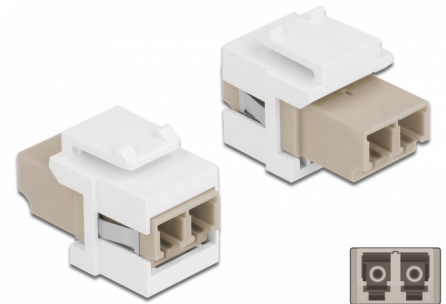


Delock Keystone Module LC Duplex female to LC Duplex female beige / white

Description

This module by Delock can be used to extend fiber optic cables. With its standardised dimensions it can be used for easy snap-in mounting in e.g. a Keystone patch panel, face plate or surface-mount box.



Item no. 86347

EAN: 4043619863471

Country of origin: China

Package: Zip poly bag

Specification

- Connectors:
 - 1 x LC Duplex female >
 - 1 x LC Duplex female
- Colour: beige
- For multi-mode fiber
- Insertion loss < 0.3 dB
- Dust covers
- For Keystone ports with 19.2 x 14.9 mm
- Housing colour: white
- Dimensions (LxWxH): ca. 29.2 x 16.5 x 21.9 mm

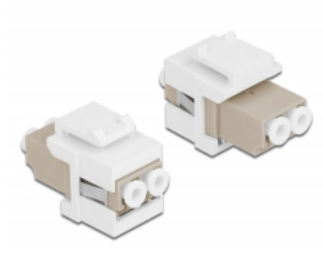
System requirements

- A free LC Duplex plug

Package content

- Keystone module

Images



General

Mounting type:	Keystone module
----------------	-----------------

Interface

Connector 1:	1 x LC Duplex
Connector 2:	1 x LC Duplex

Physical characteristics

Housing colour:	white
Length:	29.2 mm
Width:	16.5 mm
Height:	21.9 mm
Colour:	beige