

# Delock Network Wall Outlet 2 Port Cat.6A LSA

## Description

This surface mounted box by Delock can be used as a network outlet on the wall or in enclosures.



**Item no. 86197**

EAN: 4043619861972

Country of origin: China

Package: Zip poly bag

## Specification

- Connectors:
  - external:
    - 2 x RJ45 jack
  - internal:
    - 2 x LSA block
- Cable routing 180°
- Shielded (STP)
- Cat.6A specification
- TIA-568A/B pinout
- Cable diameter up to 0.644 mm (22 - 26 AWG)
- Colour: white
- Dimensions (LxWxH): ca. 61 x 59 x 29.5 mm

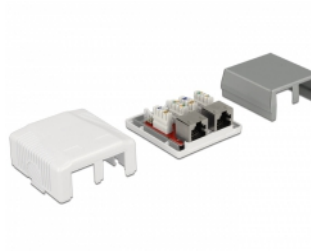
## System requirements

- Punch down tool

## Package content

- Modular Wall Outlet
- Adhesive pad, 45 x 45 mm
- 3 x screw
- 2 x zip-tie

## Images



## General

|                               |             |
|-------------------------------|-------------|
| Suitable for conductor gauge: | 22 - 26 AWG |
| Mounting type:                | wall        |

## Interface

|           |               |
|-----------|---------------|
| External: | 2 x RJ45 jack |
| Internal: | 2 x LSA block |

## Technical characteristics

|           |        |
|-----------|--------|
| Category: | Cat.6A |
|-----------|--------|

## Physical characteristics

|                 |         |
|-----------------|---------|
| Housing colour: | white   |
| Length:         | 61 mm   |
| Width:          | 59 mm   |
| Height:         | 29.5 mm |