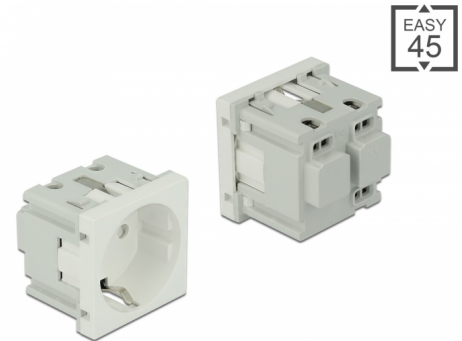


# Delock Easy 45 Grounded Power Socket 45 x 45 mm

## Description

This power socket by Delock is designed to provide a CEE 7/3 power connection. The simple snap-in mechanism ensures that the module is firmly in place and can be easily removed if necessary.



**Item no. 81392**

EAN: 4043619813926

Country of origin: China

Package: Box

## Specification

- Connectors:
  - 1 x power socket CEE 7/3 with childproof lock
  - 3 x screw terminal for PE, N, L
- Rated current: 16.0 A / 250 V~
- Rated power: 4000.0 W
- Material: ABS / PC plastic
- Suitable for module holder Delock Easy 45
- Suitable for 45 mm cable duct with minimum depth 45 mm
- Module size: 45 x 45 mm
- Dimensions (LxWxH): ca. 45 x 45 x 43 mm
- Colour: white

## System requirements

- Mains supply with grounding
- A free module port Delock Easy 45 (45 x 45 mm)

## Package content

- Easy 45 Grounded Power Socket 45 x 45 mm
- User manual

---

## Images



## General

|                |         |
|----------------|---------|
| Mounting type: | Easy 45 |
|----------------|---------|

## Interface

|              |                                           |
|--------------|-------------------------------------------|
| Connector 1: | 1 x 3 pin terminal block screw terminal   |
| Connector 2: | 1 x Steckdose CEE 7/3 mit Kindersicherung |

## Physical characteristics

|         |               |
|---------|---------------|
| Length: | 45 mm         |
| Width:  | 45 mm         |
| Height: | 43 mm         |
| Colour: | RAL 9003 Weiß |