

# Delock Easy 45 Module Holder with Frame 80 x 80 mm white

## Description

This module holder with frame by Delock is used to mount one module with 45 x 45 mm or two modules with 22.5 x 45 mm.

### Individual adaptation to the respective needs

Due to the variety of different modules, the module holder can be individually equipped and adapted to the respective needs.

### Suitable for 60 mm flush-mounted boxes

The module holder by Delock can be easily mounted on 60 mm flush-mounted or cavity installation box.



**Item no. 81300**

EAN: 4043619813001

Country of origin: China

Package: Zip poly bag

## Specification

- Robust metal holder with frame
- Suitable for standard installation box
- Module cutout: 45 mm x 45 mm
- Material: ABS
- Dimensions (LxWxH): ca. 80 x 80 x 8 mm
- Colour: white

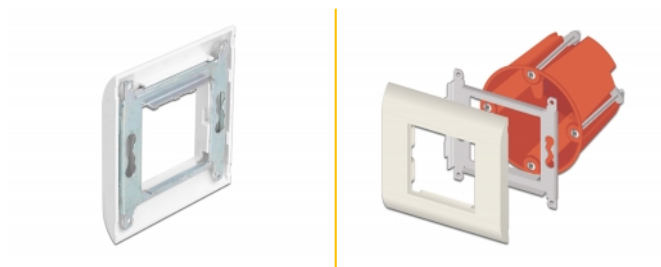
## System requirements

- A free standard installation box

## Package content

- Module holder with frame

## Images



## General

Mounting type:	Easy 45
----------------	---------

## Physical characteristics

Length:	80 mm
Width:	80 mm
Height:	8 mm
Colour:	RAL 9003 Weiß