

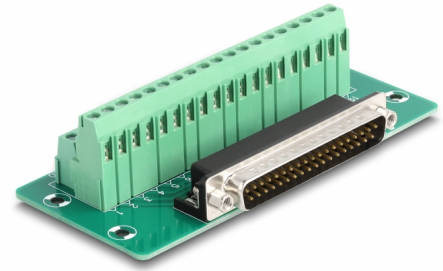
Delock D-Sub 37 pin male to Terminal Block for DIN rail

Description

This terminal block adapter by Delock can be used to connect wires with stripped ends.

DIN rail mounting

With the clips included in the delivery content, the adapter can be attached to a 15 mm or 35 mm wide DIN rail.



Item no. 66913

EAN: 4043619669134

Country of origin: China

Package: White Box

Specification

- Connectors:
 - 1 x D-Sub 37 pin male
 - 1 x 38 pin terminal block
- Pin assignment: 1:1
- Pitch: 5.00 mm
- Useable for a cable gauge from 24 to 12 AWG
- DIN rail mounting: 15 mm and 35 mm
- Operating temperature: -40 °C ~ 100 °C
- Dimensions (LxWxH): ca. 116 x 51 x 30 mm

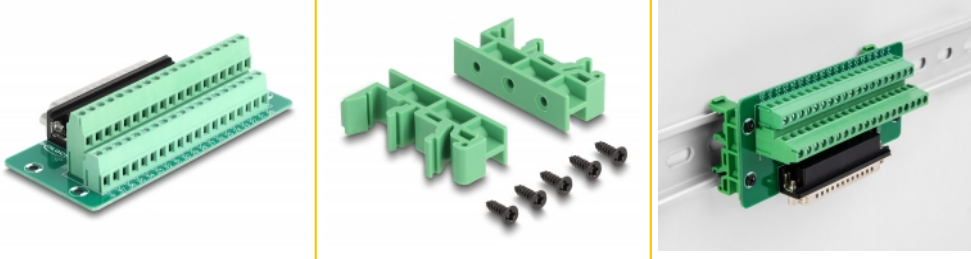
System requirements

- A free D-Sub 37 pin female
- 15 mm or 35 mm DIN rail

Package content

- Adapter
- 2 x DIN rail clip
- 5 x screws

Images



General

| | |
|----------------|------------------------------------|
| Mounting type: | DIN rail mounting: 15 mm and 35 mm |
|----------------|------------------------------------|

Interface

| | |
|--------------|---------------------------|
| Connector 1: | 1 x D-Sub 37 pin male |
| Connector 2: | 1 x 38 pin terminal block |

Technical characteristics

| | |
|------------------------|-----------------|
| Operating temperature: | -40 °C ~ 100 °C |
|------------------------|-----------------|

Physical characteristics

| | |
|------------------|--------------|
| Pitch distance: | 5.00 mm |
| Conductor gauge: | 24 to 12 AWG |
| Length: | 116 mm |
| Width: | 51 mm |
| Height: | 30 mm |