

# Delock 19" Patch Panel 16 port Cat.6A 1U grey

## Description

This patch panel by Delock can be mounted in a 19" cabinet. Up to 16 network cables can be installed at the LSA blocks, using a punch down tool.



**Item no. 66877**

EAN: 4043619668779

Country of origin: China

Package: Box

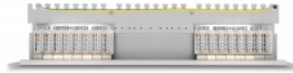
## Technical details

- Connectors:  
16 x RJ45 jack >  
16 x LSA
- For mounting in 19" network cabinet, 1U
- Compliant with Cat.6A requirements of ANSI/TIA/EIA 568-C.2
- TIA-568A/B pinout
- For solid or stranded wire (26 - 22 AWG)
- Material: metal
- Colour: grey
- Dimensions (LxWxH): ca. 482.6 x 100 x 44.5 mm

## Package content

- 19" patch panel
- 2 x cable tie 4.7 x 200 mm
- 16 x cable tie 2.4 x 100 mm
- 4 x screw
- Ground wire

## Images



## Interface

Connector 1:	16 x RJ45 jack
Connector 2:	16 x LSA

## Physical characteristics

Conductor gauge:	26 - 22 AWG
Material:	metal
Length:	482.6 mm
Width:	100 mm
Height:	44.5 mm
Colour:	grey