

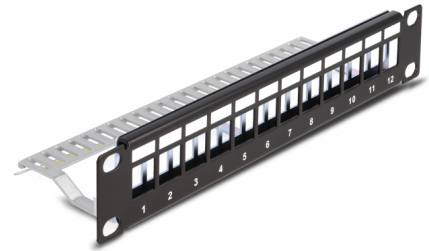
# Delock 10" Keystone Patch Panel 12 port with strain relief 1U black

## Description

This patch panel by Delock can be mounted in a 10" cabinet. With its standardized dimensions, it is suitable for easy snap-in mounting of 12 Keystone modules.

### Cable fixing for optimal cable management

On the back of the patch panel, the cables can be fixed with cable ties to enable clear and orderly cable routing.



**Item no. 66874**

EAN: 4043619668748

Country of origin: China

Package: Box

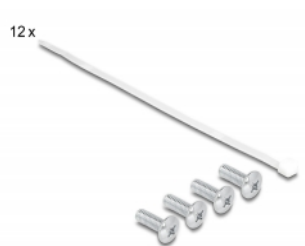
## Specification

- For mounting in 10" network cabinet, 1U
- 12 Keystone ports 16.5 x 14.9 mm
- With labelling field
- Material: metal
- Colour: black
- Dimensions (LxWxH): ca. 254 x 72 x 44 mm

## Package content

- 10" patch panel
- 12 x cable tie
- 4 x screw
- Ground wire

## Images



## General

Mounting type:	10 in
----------------	-------

## Physical characteristics

Material:	metal
Length:	254 mm
Width:	72 mm
Height:	44 mm
Colour:	black