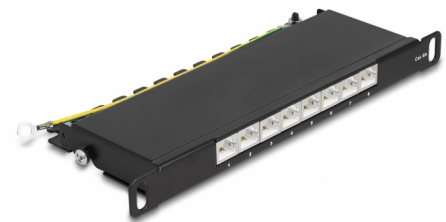


Delock 10" Patch Panel 8 port Cat.6A 0.5U black

Description

This patch panel by Delock can be mounted in a 10" cabinet. Up to 8 network cables can be installed at the LSA blocks, using a punch down tool.



Item no. 66870

EAN: 4043619668700

Country of origin: China

Package: Box

Specification

- Connectors:
8 x RJ45 jack >
8 x LSA
- For mounting in 10" network cabinet, 0.5U
- Compliant with Cat.6A requirements of ANSI/TIA/EIA 568-C.2
- TIA-568A/B pinout
- For solid or stranded wire (26 - 22 AWG)
- Material: metal
- Colour: black
- Dimensions (LxWxH): ca. 254 x 100 x 22 mm

Package content

- 10" patch panel
- 4 x cable tie
- 2 x screw
- Ground wire

Images



General

Specification:	Cat. 6A
----------------	---------

Interface

Connector 1:	8 x RJ45 jack
Connector 2:	8 x LSA

Physical characteristics

Conductor gauge:	26 - 22 AWG
Material:	metal
Length:	254 mm
Width:	100 mm
Height:	22 mm
Colour:	black