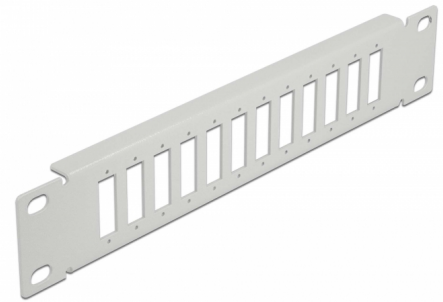


Delock 10" Fiber Optic Patch Panel 12 Port for SC Duplex / LC Quad 1U grey

Description

This patch panel by Delock can be mounted in a 10" rack. It offers 12 installation spaces for individual assembly of SC Duplex or LC Quad adapters.



Item no. 66804

EAN: 4043619668045

Country of origin: China

Package: Box

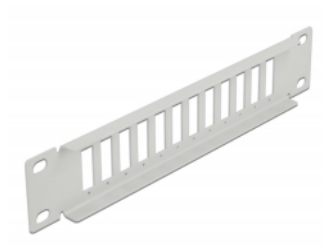
Specification

- For mounting in 10" network cabinet, 1U
- Rectangular cut-out 26.2 x 9.6 mm
- Pitch of screw hole: ca. 30.8 mm
- Housing colour: grey
- Dimensions (LxWxH): ca. 254 x 44 x 10 mm

Package content

- 10" fiber optic patch panel

Images



General

| | |
|----------------|-------|
| Mounting type: | 10 in |
|----------------|-------|

Physical characteristics

| | |
|---------|--------|
| Length: | 254 mm |
| Width: | 44 mm |
| Height: | 10 mm |
| Colour: | grey |