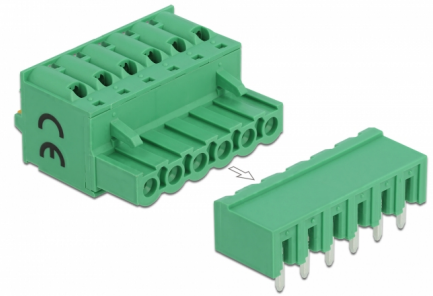


# Delock Terminal block set for PCB 6 pin 5.08 mm pitch horizontal

## Description

This terminal block set by Delock will be soldered on a PCB board, to create a detachable connection between two components.



**Item no. 66507**

EAN: 4043619665075

Country of origin: China

Package: Zip poly bag

## Specification

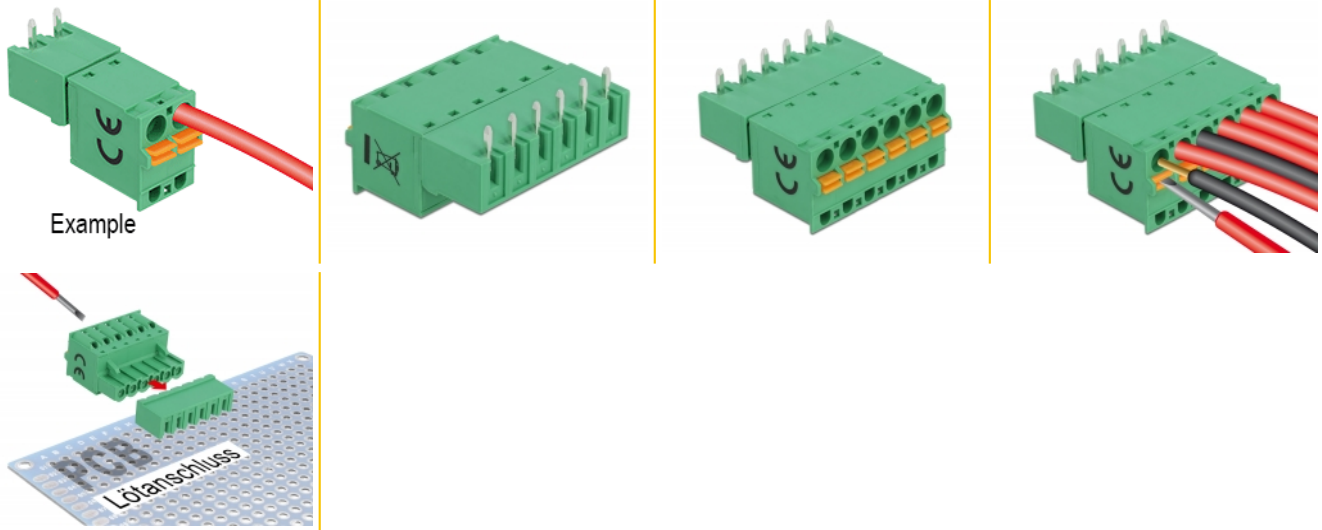
- Connectors:  
Terminal block:  
1 x 6 pin terminal block male  
1 x 6 pin terminal block with push button  
Connection terminal:  
1 x 6 pin terminal block female  
1 x 6 pin terminal block with soldering pin
- Pitch: 5.08 mm
- Environmental temperature: -40 °C ~ 105 °C
- Useable for a cable gauge range from 28 to 12 AWG
- Material: plastic
- Colour: green
- Dimensions (LxWxH): ca. 31.1 x 25.6 x 15.0 mm

## Package content

- Terminal block

- Connection terminal

## Images



## General

|                               |             |
|-------------------------------|-------------|
| Suitable for conductor gauge: | 28 - 12 AWG |
|-------------------------------|-------------|

## Interface

|              |   |
|--------------|---|
| Connector 1: | 1 x 6 pin terminal block male               |
| Connector 2: | 1 x 6 pin terminal block with push button   |
| connector 3: | 1 x 6 pin terminal block female             |
| connector 4: | 1 x 6 pin terminal block with soldering pin |

## Technical characteristics

|                      |                 |
|----------------------|-----------------|
| Storage temperature: | -40 °C ~ 105 °C |
|----------------------|-----------------|

## Physical characteristics

|                 |         |
|-----------------|---------|
| Pitch distance: | 5.08 mm |
| Material:       | Plastic |
| Length:         | 31.1 mm |
| Width:          | 25.6 mm |
| Height:         | 15.0 mm |
| Colour:         | green   |