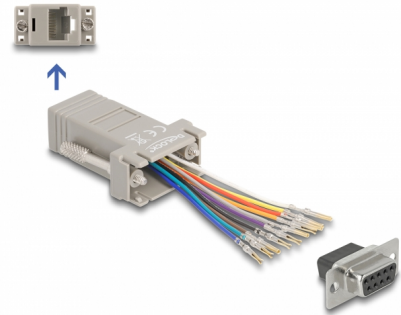


Delock D-Sub 9 pin female to RJ50 female Assembly Kit grey

Description

This adapter by Delock can be used to expand a serial interface by using an optional Cat.5 / 5e / 6 cable. Thereby one can set the pin assignment individually. Just plug the cable end into the desired hole of the connector and let it lock into the housing.



Item no. 66472

EAN: 4043619664726

Country of origin: China

Package: Zip poly bag

Specification

- Connectors:
 - 1 x serial D-Sub 9 pin female
 - 1 x RJ50 jack
- RJ50 interface assigned with 10 pins, serial interface individually assignable
- Serial connector with screw
- Dimensions incl. connector (LxWxH): ca. 49.5 x 20 x 16 mm
- Colour: grey

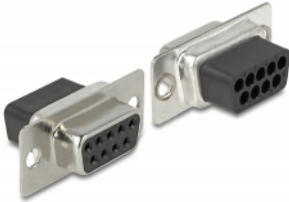
System requirements

- A free D-Sub 9 pin male port or
- A free RJ50 plug

Package content

- Adapter

Images



PIN	Farbe / Color
1	 Lila / Purple
2	 Blau / Blue
3	 Orange / Orange
4	 Schwarz / Black
5	 Rot / Red
6	 Grün / Green
7	 Gelb / Yellow
8	 Braun / Brown
9	 Weiß / White
10	 Grau / Gray

Interface

connector:	1 x RJ50 jack
Connector 1:	1 x D-Sub 9 pin female

Physical characteristics

Housing material:	Plastic
Length:	49.5 mm
Width:	20 mm
Height:	16 mm
Colour:	grey