

Delock DIN Rail 35 x 7.5 mm (10") Steel

Description

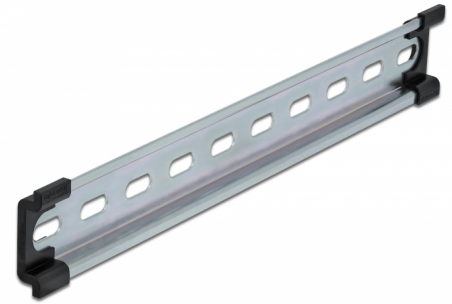
This DIN rail by Delock can be used to mounting different electronic devices and components.

Multifunctional application

The DIN rail can be mounted in a control cabinet and is used as a mounting system, e.g. for power supplies, screw terminals and interface modules.

Simple mounting option

To allow easy installation, the DIN rail is provided with slot holes.



Item no. 66188

EAN: 4043619661886

Country of origin: China

Package: Box

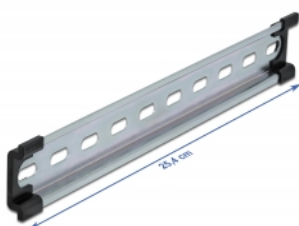
Specification

- Mounting hole: 15.0 x 6.2 mm
- Material: steel
- Dimensions (LxWxH): ca. 254.0 x 35.0 x 7.5 mm

Package content

- 1 x DIN rail
- 2 x end cover

Images





Physical characteristics

Material:	steel
Length:	254 mm
Width:	35 mm
Height:	7.5 mm