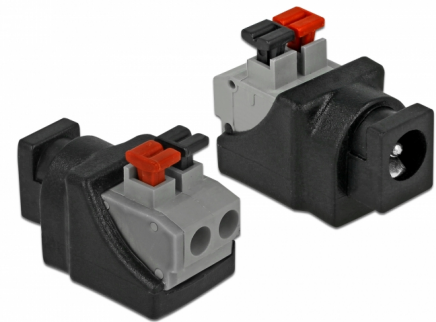


# Delock Adapter DC 5.5 x 2.1 mm female > Terminal Block with push button 2 pin

## Description

This terminal block adapter by Delock can be used to connect bare wires. Thus the adapter is not only convenient for special industry applications, but also for the hobby area, e.g. railway modelling. Various devices with a suitable DC power connector can be connected to the adapter and are supplied with power individually (depending on the requirements of the device).



**Item no. 65524**

EAN: 4043619655243

Country of origin: China

Package: Zip poly bag

## Specification

- Connectors:
  - 1 x DC 5.5 x 2.1 mm female
  - 1 x 2 pin terminal block
- Terminal block screwless
- Current: max. 9 A
- DC pin length: ca. 11 mm
- Pitch: 5.00 mm
- Dimensions (LxWxH): ca. 27 x 18 x 15 mm

## System requirements

- One free DC 5.5 x 2.1 mm female port

## Package content

- Adapter

