

Delock M.2 Docking Station for 2 x M.2 NVMe PCIe SSD with Clone function

Description

This M.2 docking station by Delock enables the installation of **two M.2 PCIe NVMe SSDs** and it can be connected via USB to the PC or laptop. The included USB cable allows the connection to a free USB-C™ port.

M.2 PCIe SSD clone function

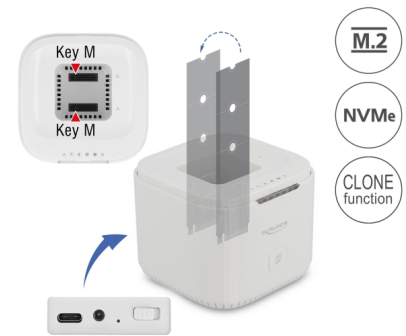
The clone function enables to **copy the content of one SSD to another** without using a PC.

Good cooling

A **fan in the bottom area** of the docking station ensures sufficient cooling of the SSDs used, so that the operation also works without problems with closed lid.

Suitable as transport box

Due to the elegant design and the specially designed lid, the docking station is also suitable as a **transport box for two M.2 memories**.



Item no. 63331

EAN: 4043619633319

Country of origin: China

Package: Retail Box

Specification

- Connectors:
 - 1 x SuperSpeed USB 10 Gbps (USB 3.2 Gen 2) USB Type-C™ female
 - 2 x 67 pin M.2 key M slot
 - 1 x DC jack
- Chipset: Asmedia ASM2362
- Supports M.2 modules with key M or key B+M based on PCIe (NVMe)
- Supports NVMe Express (NVMe)
- Data transfer rate up to 10 Gbps
- Supports UASP
- LED indicator for power, access and copy status
- Function key:
 - 1 x Clone button
 - 1 x On / Off switch
- Dimensions (LxWxH): ca. 132 x 93 x 93 mm

- Hot Plug, Plug & Play

Power supply specification

- Wall power supply
- Input: AC 100 ~ 240 V / 50 ~ 60 Hz / 0.8 A
- Output: 12 V / 2 A
- Ground outside, plus inside
- Dimensions:
 - inside: ø ca. 2.5 mm
 - outside: ø ca. 5.5 mm
 - length: ca. 10 mm

System requirements

- Android 9.0 or above
- Chrome OS 83.0 or above
- iPad Pro (2018)
- Linux Kernel 5.4 or above
- Mac OS 10.15.6 or above
- Windows 8.1/8.1-64/10/10-64
- Device with a free USB Type-C™ port or with a free Thunderbolt™ 3 port

Package content

- M.2 docking station
- Cable USB-C™ male to USB-C™ male, length ca. 1 m
- External power supply 12 V / 2 A
- User manual

Images



General

Function:	Clone Function
Supported operating system:	Android 9.0 or above Chrome OS 83.0 or above Linux Kernel 5.4 or above Mac OS 10.15.6 or above Windows 10 32-Bit Windows 10 64-Bit Windows 8.1 32-Bit Windows 8.1 64-Bit iPad Pro (2018)
Slot:	PCIe
Maximum height of the components on the module:	1.5 mm application of double-sided assembled modules supported

Interface

Connector 1:	1 x USB 10 Gbps USB Type-C™ female
Connector 2:	2 x 67 pin M.2 key M slot
connector 3:	1 x DC jack

Technical characteristics

Data transfer rate:	10 Gbps
---------------------	---------

Physical characteristics

Length:	132 mm
Width:	93 mm
Height:	93 mm
Colour:	white