

Delock Slim SATA 5.25" Installation Frame (13 mm) for 1 x M.2 SSD Key B / 1 x mSATA SSD

Description

M.2

This Delock installation frame in slim-format can be installed into a 5.25" SATA slim bay in order to operate a M.2 SSD or an mSATA SSD. If both slots are occupied, only the M.2 SSD can be used.



Item no. 62718

EAN: 4043619627189

Country of origin: China

Package: Retail Box

Specification

- Connector:
 - 1 x 67 Pin M.2 key B slot
 - 1 x mSATA slot (half size / full size)
 - 1 x Slim SATA 13 pin female
- For the installation into a slim 5.25" bay
- Interface: SATA
- Supports M.2 modules in format 2280, 2260 and 2242 with key B or key B+M based on SATA
- Maximum height of the components on the module: 1.5 mm application of double-sided assembled modules supported
- Data transfer rate up to 6 Gb/s
- Dimensions (LxWxH): ca. 128 x 128 x 13 mm
- OS independent, no driver installation necessary

System requirements

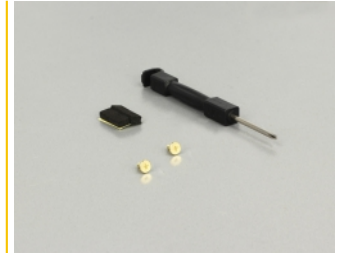
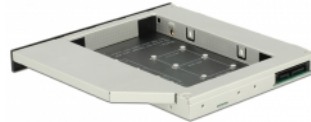
- A free slim SATA 5.25" bay

Package content

- Slim SATA 5.25" installation frame

- Screwdriver
- Spacer

Images



General

| | |
|---|--|
| Form factor: | Slim 5.25" |
| Supported operating system: | OS independent, no driver installation necessary |
| Slot: | SATA |
| Supported module: | mSATA full size / half size M.2 modules in format 2280, 2260, 2242 and 2230 with key B or key B+M based on SATA |
| Maximum height of the components on the module: | 1.5 mm application of double-sided assembled modules supported |

Interface

| | |
|--------------|--|
| Connector 1: | 1 x Slim SATA 13 pin receptacle |
| Connector 2: | 1 x 67 pin M.2 key B slot |
| connector 3: | 1 x mSATA slot (half size / full size) |

Technical characteristics

| | |
|---------------------|--------|
| Data transfer rate: | 6 Gb/s |
|---------------------|--------|

Physical characteristics

| | |
|---------|--------|
| Length: | 128 mm |
| Width: | 128 mm |
| Height: | 13 mm |