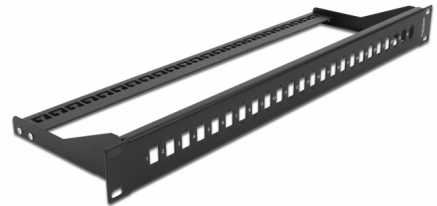


Delock 19" Fiber Panel for 24 x SC Simplex / LC Duplex

Description

This patch panel by Delock can be mounted in a 19" rack. It offers 24 installation spaces for individual assembly of SC Simplex or LC Duplex adapters.



Item no. 43405

EAN: 4043619434053

Country of origin: China

Package: White Box

Specification

- For mounting in 19" racks, 1U
- Rectangular cut-out 13.3 x 9.6 mm
- Pitch of screw hole: ca. 18.0 mm
- Removable strain relief
- Housing colour: black
- Dimensions (LxWxH): ca. 482.6 x 150.0 x 43.6 mm

Package content

- 19" patch panel

General

Mounting type:	19 in
----------------	-------

Physical characteristics

Housing colour:	black
Depth:	150 mm
Width:	482.6 mm
Height:	43.6 mm