

Delock External Dual Enclosure for 2 x 3.5" SATA HDD with USB Type-C™ female transparent - tool free

Description

This plastic enclosure by Delock is used for the installation of **two 3.5" SATA hard drive**. The included USB Type-C™ to USB Type-A cable allows the connection to a free USB Type-A female port.

Transparent enclosure with stand

The **sturdy, transparent plastic housing** provides a view inside to quickly see which memory is inside. A stand is supplied for vertical operation.

HDD installation without tools

The special feature of this enclosure is that **no tools** are required to install the HDD. The lid can be pushed backwards by a little pressure, the HDD will be attached to the SATA port and then the lid is reattached until it locks.



Item no. 42624

EAN: 4043619426249

Country of origin: China

Package: Retail Box

Specification

- Connectors:
 - external:
 - 1 x SuperSpeed USB (USB 3.2 Gen 1) USB Type-C™ female
 - 1 x DC jack
 - internal:
 - 2 x SATA 6 Gb/s 22 pin receptacle
- On / Off switch
- Suitable for 3.5" SATA HDD:
 - SATA HDD up to 6 Gb/s
 - HDD up to 10 TB
- Chipset: JMicron JMS561U
- Data transfer rate:
 - SuperSpeed USB 5 Gbps,
 - Hi-Speed 480 Mbps,
 - Full-Speed 12 Mbps,
 - Low-Speed 1.5 Mbps
- LED indicator for power and access

- Transparent plastic housing
- Dimensions (LxWxH): ca. 174 x 113 x 60 mm
- Hot Swap, Plug & Play

Power supply specification

- Input: AC 100 ~ 240 V / 50 ~ 60 Hz / 1.2 A
- Output: 12 V / 3 A
- Ground outside, plus inside
- Dimensions:
 - inside: \varnothing ca. 2.0 mm
 - outside: \varnothing ca. 5.5 mm
 - length: ca. 10 mm

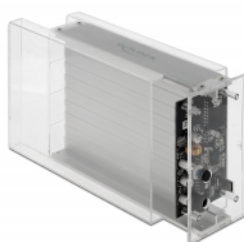
System requirements

- Chrome OS 74.0 or above
- Linux Kernel 3.4 or above
- Mac OS 10.14.5 or above
- Windows 7/7-64/8.1/8.1-64/10/10-64
- PC or laptop with a free USB Type-A port

Package content

- 3.5" external enclosure
- Cable USB-C™ male to USB Type-A male, length ca. 1 m
- Stand
- Power supply
- User manual

Images



General

Function:	Hot Swap Plug & Play
Suitable for data medium:	2.5" 3.5" SSD or HDD
Supported operating system:	Chrome OS 74.0 or above Linux Kernel 3.4 or above Mac OS 10.14.5 or above Windows 10 32-Bit Windows 10 64-Bit Windows 7 32-Bit Windows 7 64-Bit Windows 8.1 32-Bit Windows 8.1 64-Bit

Interface

External:	1 x DC jack 1 x USB 5 Gbps USB Type-C™ female
Internal:	2 x SATA 22 Pin Buchse

Technical characteristics

Chipset:	JMicron JMS561
----------	----------------

Physical characteristics

Housing material:	Plastic
Cable length:	1 m
Length:	174 mm
Width:	113 mm
Height:	60 mm
Colour:	transparent