

Delock USB4™ 40 Gbps Enclosure for 1 x M.2 NVMe SSD - tool free

Description

This enclosure by Delock enables the installation of an **M.2 PCIe NVMe SSD** in 2280 format, it can be connected via **Thunderbolt™ 3, Thunderbolt™ 4 or USB-C™** to the PC or laptop. The robust metal housing with cooling fins ensures an optimum temperature of the memory.

USB4™ 40 Gbps

Due to **USB4™** compatibility, the Delock enclosure can be connected to Thunderbolt™ 3 and 4 ports, as well as to all USB Type-C™ ports. The maximum data transfer rate depends on the host device.

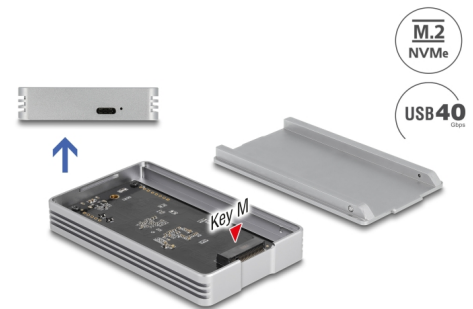
SSD installation without tools

The special feature of this enclosure is that **no tools are required** to install the M.2 SSD.

Note

Due to the USB to NVMe controller, the data transfer rate on a USB Gen 2x2 port is only 10 Gbps.

There is no support for SATA M.2 SSD.



Item no. 42018

EAN: 4043619420186

Country of origin: China

Package: Retail Box

Specification

- Connectors:
external: 1 x USB4™ 40 Gbps (Gen 3x2) USB Type-C™ female
internal: 1 x 67 pin M.2 key M slot
- Chipset: Intel JHL7440, Realtek RTL9210B
- Supports M.2 modules in format 2280 with key M or key B+M based on PCIe (NVMe)
- Maximum height of the components on the module: 1.5 mm, application of double-sided assembled modules supported
- Supports NVM Express (NVMe)
- Data transfer rate up to 40 Gbps
- LED indicator for power and access

- Metal housing
- Hot Plug, Plug & Play
- Dimensions (LxWxH): ca. 100 x 60 x 14 mm

System requirements

- Android 10.0 or above
- Chrome OS 90.0 or above
- iPad Air (4th Generation) or above
- Linux Kernel 5.13 or above
- Mac OS 12.4 or above
- Windows 8.1/8.1-64/10/10-64/11
- Device with a free USB Type-C™ port or with a free Thunderbolt™ 3 port or
- Device with a free Thunderbolt™ 4 port

Package content

- External enclosure M.2
- Thunderbolt™ 3 cable, length ca. 50 cm
- 2 x thermal conductive pad
- 2 x rubber nipple
- User manual

Images



General

Function:	Plug & Play
Supported operating system:	Windows 10 32-Bit Windows 10 64-Bit Windows 8.1 32-Bit Windows 8.1 64-Bit Android 10.0 or above iPad Air (4th Generation) or above Chrome OS 90.0 or above Windows 11 Mac OS 12.4 oder höher Linux Kernel 5.13 or above
Supported module:	Supports M.2 modules in format 2280 with key M or key B+M based on PCIe (NVMe)
Maximum height of the components on the module:	1.5 mm application of double-sided assembled modules supported

Interface

External:	1 x USB4™ 40 Gbps (Gen 3x2) USB Type-C™ female
Internal:	1 x 67 pin M.2 key M slot

Technical characteristics

Data transfer rate:	40 Gbps
---------------------	---------

Physical characteristics

Housing material:	Aluminium
Length:	100 mm
Width:	60 mm
Height:	14 mm
Colour:	silver