

Delock LTE UMTS GSM Antenna N jack 7 - 10 dBi directional wall and pole mounting outdoor

Description

This antenna by Delock allows the usage of different LTE, GSM and UMTS bands indoors and outdoors. It is completely compatible to Bluetooth, WLAN 2.4 GHz, ZigBee, DECT, Z-Wave and LoRa 868 MHz / 915 MHz.



Item no. 12435

EAN: 4043619124350

Country of origin: China

Package: White Box

Specification

- Connector: 1 x N jack
- Frequency range:
698 - 960 MHz
1710 - 2700 MHz
- ZigBee, Bluetooth, WLAN 2.4 GHz, DECT, Z-Wave, LoRa 868 MHz / 915 MHz
- Antenna gain: 7 - 10 dBi
- Impedance: 50 Ohm
- Polarisation: vertical
- HBW horizontal beamwidth: 70°
- VBW vertical beamwidth: 55°
- VSWR: 1.8
- Transmission power: max. 100 W
- Housing material: ABS
- Protection class: IP65
- Colour: white
- Operating temperature: -40 °C ~ 70 °C
- Dimensions (LxWxH): ca. 210 x 180 x 45 mm

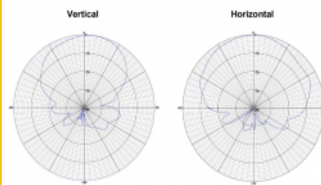
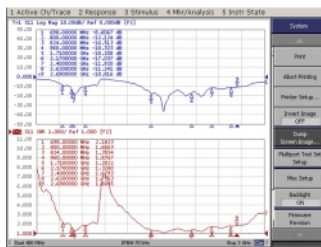
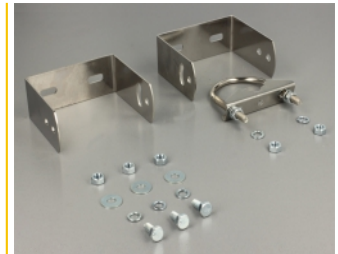
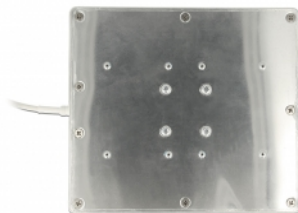
System requirements

- Cable with N plug

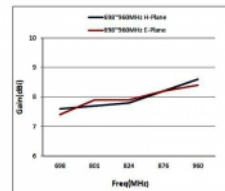
Package content

- LTE antenna
- Mounting material

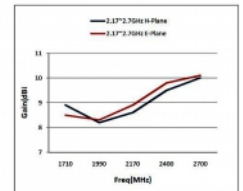
Images



H-Plane	
MHz	dBi
698	5.9
800	6.8
960	7.1
Average	6.3

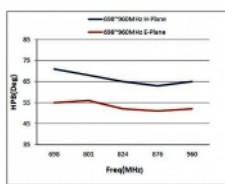


H-Plane	
MHz	dBi
1710	
2170	
2400	
2700	

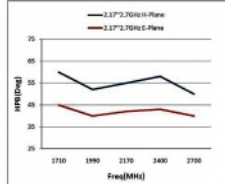


E-Plane	
MHz	dBi
1710	
2170	
2400	
2700	1
Average	0

H-Plane	
MHz	HPBW(Deg)
698	71
800	68
960	65
Average	68



H-Plane	
MHz	HPBW(Deg)
1710	60
2170	55
2400	58
2700	50
Average	55.7



E-Plane	
MHz	HPBW(Deg)
1710	45
2170	42
2400	43
2700	40

Interface

connector:	1 x N female
------------	--------------

Technical characteristics

Frequency range:	1710 - 2700 MHz 698 MHz - 960 MHz
Gain:	7 - 10 dBi
Beam width horizontal:	70°
Beam width vertical:	55°
Impedance:	50 Ω
Operating temperature:	-40 °C ~ 70 °C
Polarisation:	vertical
Power handling:	100W
VSWR:	1,8

Physical characteristics

Housing material:	ABS
Weight:	0.5 kg
Length:	210 mm
Width:	180 mm
Height:	45 mm
Colour:	white