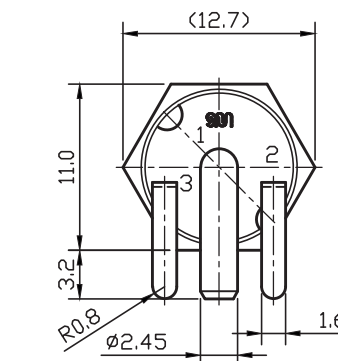
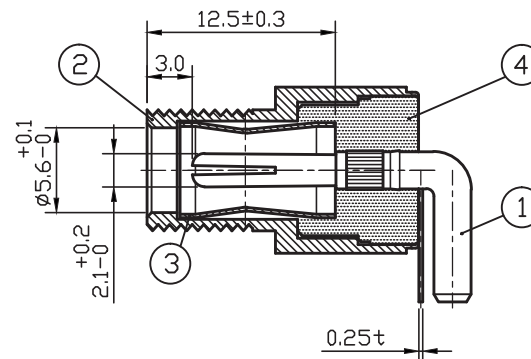
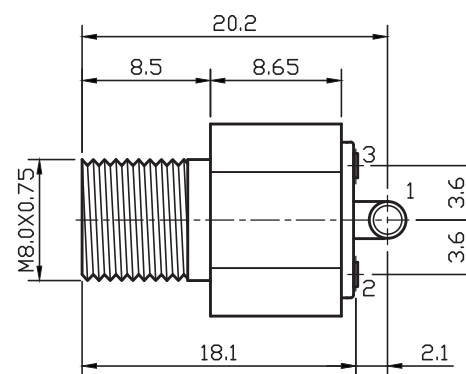
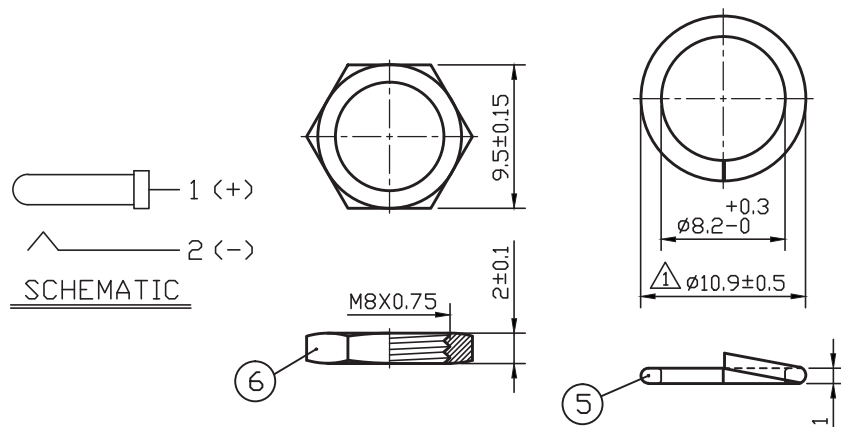


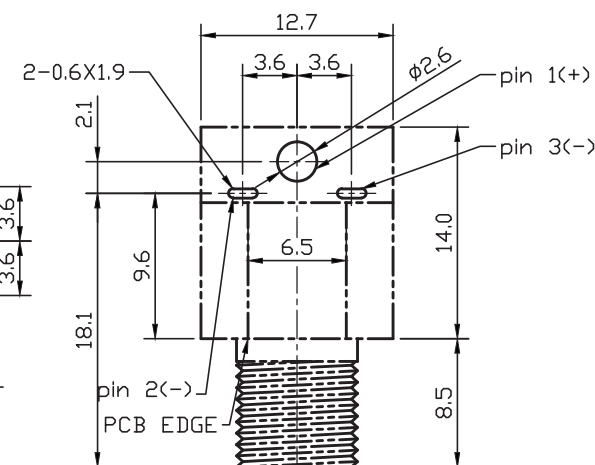
DIMENSIONS RANGE	TOLERANCE UNLESS SPECIFIED
0.5≤X<1	±0.1
1≤X≤6	±0.15
6<X≤18	±0.2
18<X≤50	±0.3



REAR VIEW



BOTTOM VIEW



TOP VIEW

PCB LAYOUT

Follow RoHS Standard

1. Dielectric strength : AC 500V / 1 minute.
2. Insulation resistance : 100MΩ or over. (DC 500V)
3. Contact resistance : 30mΩ or less.
4. Extraction force : 0.3~3Kg.
5. Rated voltage : 20 V
6. Rated current : 10 A

DELOCK

we move the world

Title: Connector DC 5.5 x 2.1 mm female bulkhead
soldering version - Hexagon 20 V / 10 A

Date	2023 / 11 / 30	Item no.	90179
Unit	mm	Barcode	4043619901791
Projection		File No.	88276
Rev	A		