

Support Delock

If you have further questions, please contact our customer support: support@delock.de

Final clause

Information and data contained in this manual are subject to change without notice in advance. Errors and misprints excepted.

Copyright

No part of this user's manual may be reproduced, or transmitted for any purpose, regardless in which way or by which means, electronically or mechanically, without explicit written approval of Delock.

Edition: 12/2022

Declaration of conformity

Products with a CE symbol fulfill the EMC directive (2014/30/EU) and RoHS directive (2011/65/EU+2015/863+2017/2102), which were released by the EU-comission.

The declaration of conformity can be downloaded here:

https://www.delock.de/produkte/G_90603/merkmale.html

WEEE-notice

The WEEE (Waste Electrical and Electronic Equipment)-directive, which became effective as European law on February 13th 2003, resulted in an all out change in the disposal of disused electro devices. The primarily purpose of this directive is the avoidance of electrical waste (WEEE) and at the same time the support of recycling and other forms of recycling in order to reduce waste. The WEEE-logo on the device and the package indicates that the device should not be disposed in the normal household garbage. You are responsible for taking the disused electrical and electronical devices to a respective collecting point. A separated collection and reasonable recycling of your electrical waste helps handling the natural resources more economical. Furthermore recycling of electrical waste is a contribution to keep the environment and thus also the health of men. Further information about disposal of electrical and electronical waste, recycling and the collection points are available in local organizations, waste management enterprises, in specialized trade and the producer of the device.



EU Import: Tragant Handels- und Beteiligungs GmbH
Beeskowdamm 13/15, 14167 Berlin, Germany



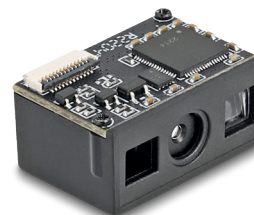
User manual



Bedienungsanleitung

DELLOCK®
we move the world

Barcode Scanner Module 1D and 2D - German Version



Product-No: 90603
User manual no: 90603-a
www.delock.com



English

Safety instructions

- Protect the product against moisture
- Protect the product against direct sunlight
- Do not look directly into the LED diode of the scanner

Beep tones

Three short beeps	Scanner is active
Two short beeps	Scanner reads successful codes
One long beep	Scanner switches off

Reset to factory settings

To reset the unit to factory settings, please scan the code below.
The device will then be set as a USB keyboard.



USB Connection

With the code below you can set the scanner as a USB keyboard.



If the system asks for a serial port (USB Com) please scan the following code and install the driver manually.



Scan Mode

You can choose between three different modes.
The Trigger Mode, in which the scan is performed exclusively by pressing a button.



The autosense mode, where the scanner lights up automatically whenever a barcode is presented.



And the continuous mode, where the scanner is active and lit all the time.



Sound settings

The scanner can be set to two different tone settings.

On



Off



Compensating light

Light on



Light off



LED Light settings

LED on



LED off



German language setting

Before the first use, please scan the codes below - step by step, to confirm the German keyboard.

1.



2.








Deutsch

Sicherheitshinweise




- Produkt vor Feuchtigkeit schützen
- Produkt vor direkter Sonneneinstrahlung schützen
- Schauen Sie nicht direkt in die LED Diode des Scanners

Piep Töne

Drei kurze Pieptöne	Scanner wird aktiviert
Zwei kurze Pieptöne	Der Scanner liest erfolgreich einen Konfigurations-Barcode.
Ein Langer Piepton	Gerät schaltet sich aus

Auf Werkseinstellungen zurücksetzen Um das Gerät auf Werkseinstellungen zurückzusetzen scannen Sie bitte untenstehenden Code. Das Gerät wird dann als USB Tastatur eingestellt.	
USB Verbindung Mit untenstehendem Code können Sie den Scanner als USB Tastatur einstellen.	
Wenn das System nach einer seriellen Schnittstelle (USB Com) fragt, scannen Sie bitte folgenden Code und installieren Sie manuell den Treiber.	

Scan Modi

Sie können zwischen drei verschiedenen Modi wählen. Dem Trigger Mode, bei dem der Scan ausschließlich per Knopfdruck erfolgt.	
Dem Autosense Modus, bei dem der Scanner immer dann automatisch aufleuchtet, wenn ein Barcode vorgehalten wird.	
Und dem kontinuierlichem Modus, bei dem der Scanner die ganze Zeit aktiv ist und leuchtet.	

Ton Einstellungen Der Scanner kann in zwei unterschiedliche Toneinstellungen eingestellt werden.	An 	Aus 
Kompensationslicht	Licht an 	Licht aus 
LED Lichteinstellung	LED an 	LED aus 
Deutsche Tastatur Sprache Vor dem ersten Einsatz scannen Sie bitte die untenstehenden Codes der Reihe nach, um die deutsche Tastatur zu bestätigen.	1. 	2. 