
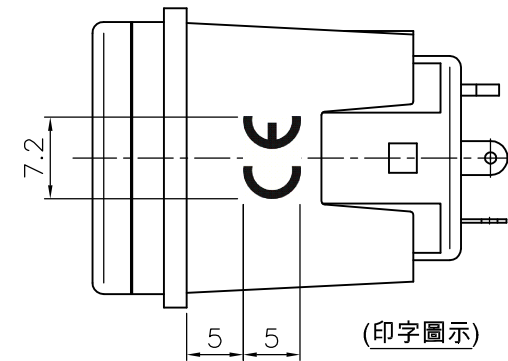
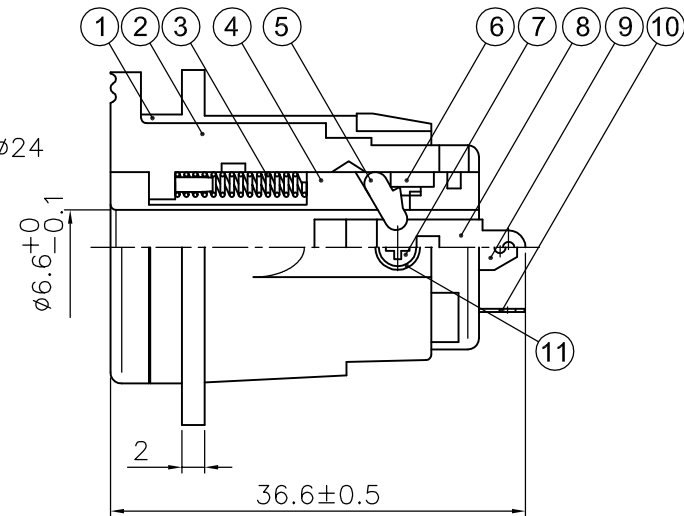
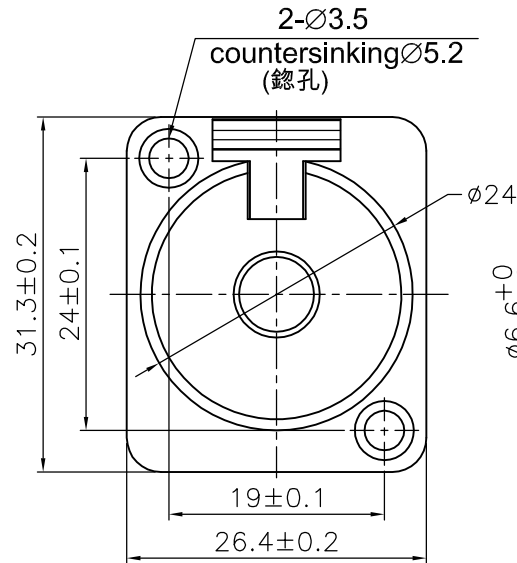
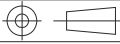


★ **DELOCK**  此商標位於"R端子"那面,且方向一致



★ CE標誌位於"T端子"底面,且方向一致

|     |                         |                    |            |      |
|-----|-------------------------|--------------------|------------|------|
| 11  | 絕緣墊<br>(INSULATION PAD) | PA                 | 黑色(BLACK)  | 1    |
| 10  | T端子(T-TERMINAL)         | PHOSPHOR<br>BRONZE | 鍍金(GOLD)   | 1    |
| 9   | S端子(S-TERMINAL)         | PHOSPHOR<br>BRONZE | 鍍金(GOLD)   | 1    |
| 8   | R端子(R-TERMINAL)         | PHOSPHOR<br>BRONZE | 鍍金(GOLD)   | 1    |
| 7   | 螺絲(SCREW)               | A3                 | 鍍鎳(NICKEL) | 1    |
| 6   | 矽膠粒(SILICA GEL)         | SILICA GEL         | 黑色(BLACK)  | 1    |
| 5   | 卡粒(LOCK SLICE)          | PA                 | 紅色(RED)    | 1    |
| 4   | 基座<br>(PLSTIC HOUSING)  | PA                 | 黑色(BLACK)  | 1    |
| 3   | 彈簧(SPRING)              | T8                 | 鍍鎳(NICKEL) | 1    |
| 2   | 推杆(PUSH BUTTON)         | PA                 | 紅色(RED)    | 1    |
| 1   | 鋅殼(DIE-CAST SHELL)      | ZZnAl4-0           | 鍍鎳(NICKEL) | 1    |
| NO. | DESCRIPTION             | MATERIAL           | FINISH     | Q'TY |

|                                     |   |   |               |
|-------------------------------------|---|---|---------------|
| <b>DELOCK®</b><br>we move the world |   | Title: D-Type Module<br>6.35 mm jack to solder connection |               |
| Date                                | 2020 / 02 / 05  | Item no.  | 86534         |
| Unit                                | mm  | Barcode   | 4043619865345 |
| Projection                          |  | File No.  |               |
| Rev                                 | A   |   |               |