

Industrial Series

DDR3 > Dual SATA 6 Gb/s RAID Module - 2 x M.2

Item-No.	62622
EAN	4043619626229
Country of origin	Taiwan

Features

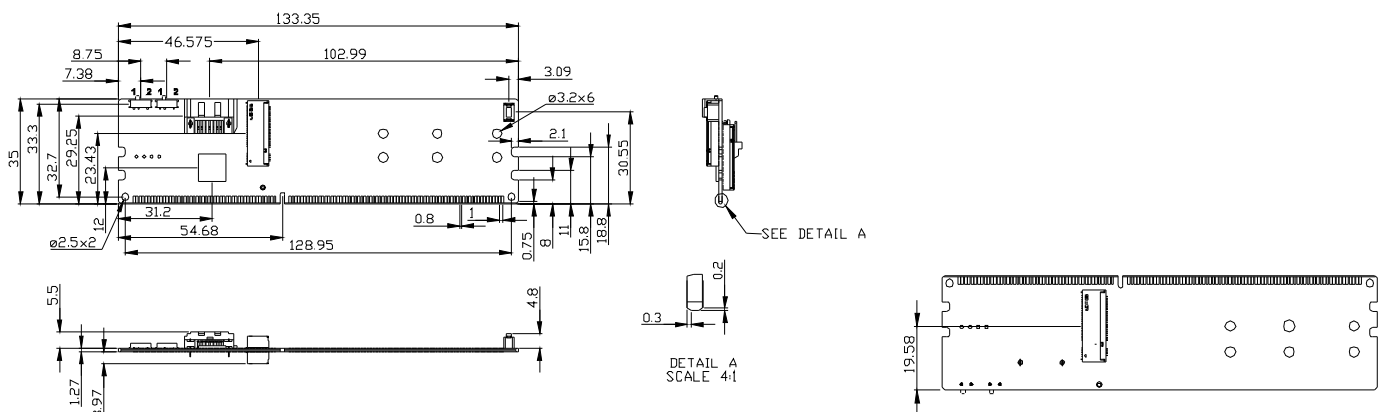


- Supports SATA zu Dual SATA 6 Gb/s Port
- Supports H/W RAID 0, 1 über SATA
- Supports 2 x M.2-B 2242/2260/2280
- 30µ Gold finge
- Industrial-Design

Special features

- The module can be connected with two M.2 flash memories which can work as HDD in mirror function or with the complete memory volume.

Mechanical drawing



Specification

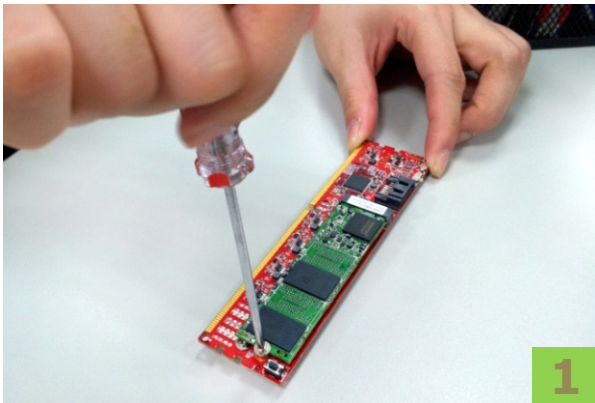
Form-Factor	DDR3 240pin
Input I/F	SATA III
Output I/F	SATA III
Output Connector	M.2-B 2242/2260/2280 x 2
Chipset	JMS562
Max TDP	9W(6A x 1.5V)
Dimension (WxLxH)	133.3 x 35.0 x 13.2mm, Weight:22 g
Temperature	Operation: STD: 0°C ~ +70°C Storage: -55°C ~ +95°C
Environment	Vibration: 5G @7~2000Hz, Shock: 50G @ 0.5ms
Notes	RAID Mode Setting: 1. [J1:J2] RAID0: 2:2, RAID1: 1:2, PM: 1:1 2. Press tact switch SW1 for reset.

RAID Mode Setting

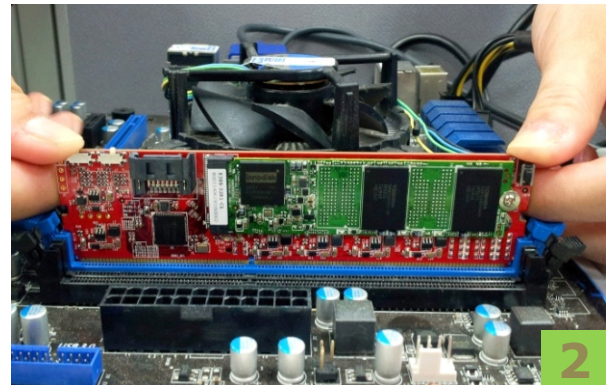
	J1	J2
RAID 0	2	2
RAID 1	1	2
Port Multiplier	1	1

Red	Power
Green	Access
Blue	Error
Green + Blue	Rebuild

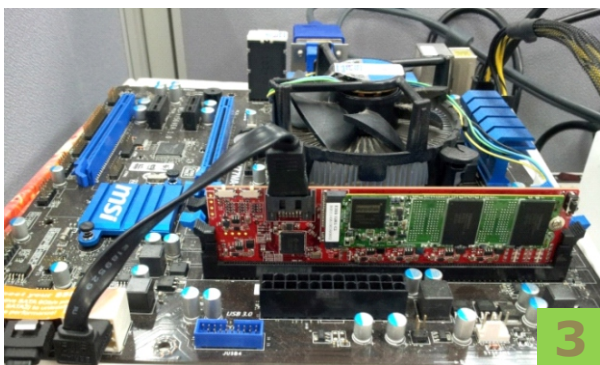
Installation Guide



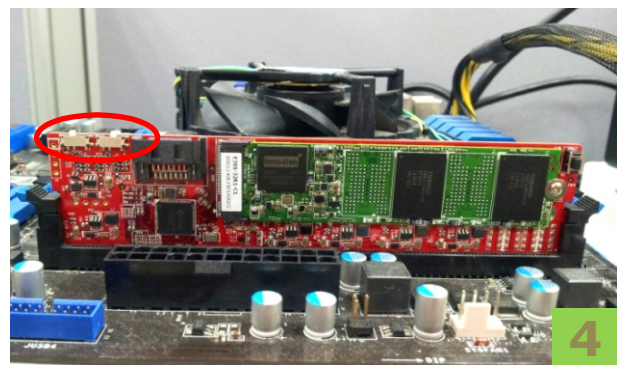
Please fix M.2 SSD in M.2 slot.



Please connect the adapter to onboard DIMM slot.



Please connect SATA cable from adapter to onboard SATA slot.



Please use slide switch J1/J2 to change RAID mode as above setting list.



Please push tact switch 3 seconds for reset.