

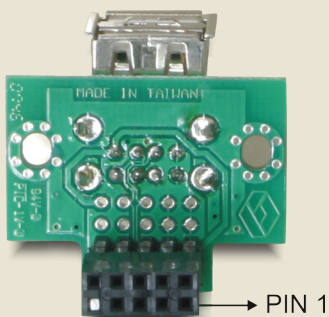
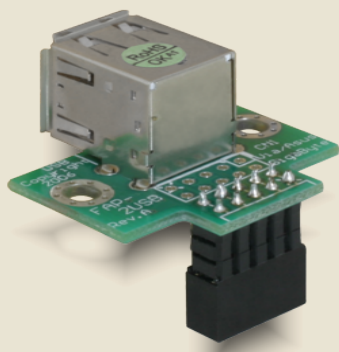


USB Pinheader female > 2x USB2.0 female - horizontal (RD)

Description

This USB Pinheader-female adapter can be plugged to a free USB Pinheader-male of your mainboard in order to expand your system internally by 2 USB ports. Thus you can use e.g. connect an USB memory stick or USB-WLAN stick. Both female ports lead to the reversed direction of Pin 1, based on Pin 1 Pinheader on the mainboard.

Images



Ref. 41762
EAN 4043619417629

Specification

- for 2x USB2.0-A female directly on the mainboard
- a 2x5 2.54mm Pinheader female
- for Pinheader with USB-Power on Pin 1+2
- USB Port direction: horizontal
- RD= reversed direction

System requirement

- Mainboard with a free USB Pinheader-male

Package

- Poly Bag